

ITEM	MANUFACTURER	MODEL	DESCRIPTION	QTY.	FINISH
1	IPSO	ICN090KCV	WASHER-EXTRACTOR	2	
2	IPSO	ICN090KCV	WASHER-EXTRACTOR	2	
3	IPSO	ICN040KCV	WASHER-EXTRACTOR	4	
4	IPSO	ICN030KCV	WASHER-EXTRACTOR	8	
5	IPSO	ICN020KCV	WASHER-EXTRACTOR	8	
6	IPSO	IT145N	STACK TUMBLER	2	
7	IPSO	IT075N	STACK TUMBLER	2	
8	IPSO	ACBR600KX1	IC60 SINGLE BASE	2	
9	IPSO	ACBR400KX2	IC40 DOUBLE BASE	2	
10	IPSO	ACBR300KX2	IC30 DOUBLE BASE	2	
11	IPSO	ACBR200KX2	IC20 DOUBLE BASE	4	
12				4	

DRAIN OUTLET SIZE

MODEL	REQUIRED MIN. RISE LINE FROM WASH	REQUIRED MIN. RISE LINE FROM BALANCE
ICN090KCV	3"	3"
ICN060KCV	3"	3"
ICN040KCV	3"	3"
ICN030KCV	2"	2"
ICN020KCV	2"	2"

DRAIN MUST BE VENTED. CONSULT PLUMBING CODES FOR LOCAL REQUIREMENTS.

GAS INLET SIZE

MODEL	PROPANE	NATURAL GAS	CONNECTION SIZE	REQUIRED
IT145N	6.5-11.51 NATURAL	190000	1/2"	1/2"
IT075N	6.5-11.51 NATURAL	165000	1/2"	1/2"
IT130N	6.5-11.51 NATURAL	146000	1/2"	1/2"
TOTAL		2258000		3"

PROVIDE 1" LOOP TO EQUALIZE GAS PRESSURE. GAS CONNECTION TO BE PERFORMED BY QUALIFIED TECHNICIAN IN ACCORDANCE WITH LOCAL CODES.

NOTE: THE RECOMMENDED GAS LINE IS SIZED FOR THE DRYERS ONLY. ALL OTHER ITEMS IN THE LAUNDRY THAT REQUIRE GAS ARE NOT INCLUDED.

EXHAUST/VENT OUTLET SIZE

MODEL	SIZE	AF TOUM	MIN. GROSS AREA
IT145N	10"	1200 cfm	4.28 sq ft
IT075N	8"	920 cfm	2.63 sq ft
IT130N	8"	800 cfm	2.63 sq ft

PROVIDE AT LEAST 22.9 SQ FT. THIS FIGURE DOES NOT INCLUDE MAKE-UP AIR. NOTE: WATER CONSUMPTION AND WATER USAGE INFORMATION SHOWN IN THIS UTILITY SCHEDULE ARE ONLY FOR THE WASHING MACHINES. OTHER ITEMS LOCATED WITHIN THE LAUNDRY SUCH AS WATER HEATERS ARE NOT INCLUDED.

ELECTRICAL REQUIREMENTS

MODEL	VOLTAGE	FULL LOAD	START	WEG. SIZE
ICN090KCV	208-240/60/3	9A	15A	AWG14
ICN060KCV	208-240/60/3	6A	15A	AWG14
ICN040KCV	208-240/60/3	4A	15A	AWG14
ICN030KCV	208-240/60/3	4A	15A	AWG14
ICN020KCV	208-240/60/3	3A	15A	AWG14
IT145N	208-240/60/1/3	12A	15A	AWG14
IT075N	208-240/60/1/3	7.6A	10A	AWG14
TOTALS	N/A	229.2A	530A	N/A

ALL MACHINES MUST BE GROUNDING. PROVIDE GROUND SOURCE IN ACCORDANCE WITH CODES.

CONSULT ELECTRICAL CODE FOR LOCAL REQUIREMENTS. USE LISTED 3 POLE CIRCUIT BREAKERS FOR 3PH SERVICE. PLEASE REFER TO THE EQUIPMENT INSTALLATION MANUAL FOR EXACT BREAKER SPECIFICATIONS. FOR SAFETY PURPOSES, CLEARLY MARKED & EASILY ACCESSIBLE POWER CUTOFF SWITCHES CAN BE PROVIDED FOR EACH MACHINE.

DYNAMIC LOAD SPECIFICATIONS

MODEL	SIZE	PHASE	LINE	MINIMUM	PHASE	LINE
ICN090KCV	137	149	149	10.4	10.4	10.4
ICN060KCV	106	143	119	11.4	11.4	11.4
ICN040KCV	100	119	109	12.2	12.2	12.2
ICN030KCV	99	109	109	12.8	12.8	12.8
ICN020KCV	96	96	96	13.7	13.7	13.7

* DYNAMIC LOAD FREQUENCY AT HIGHEST

NOTE: PLEASE REFER TO THE EQUIPMENT INSTALLATION MANUAL FOR REQUIRED FLOOR & PAD THICKNESS ON SPECIFIC WASHER SIZES AND MODELS.

NOTE: For all ADDITIONAL installation requirements of Alliance Laundry Systems equipment, please refer to the correct manufacturer's installation manual.

NOTE: All non-Alliance equipment is shown for general placement only. For actual installation requirements please refer to the actual manufacturers installation manual.

NOTE: Electrical sub-panels may be installed in the bulkheads behind the washers. Please contact the project distributor for further information.

Suggested dryer venting arrangement. Consult dryer installation manuals for detailed information. Provide at least 22.9 sq ft unrestricted open area for dryer bank 1 make-up air supply.

NOTE: All tumblers that are to be installed as 208-240/60Hz/1ph will REQUIRE L1, L2, Neutral and ground wire hook-ups.

NOTE: Make-up air opening is to be sized per the manufacturers installation manual. The actual make-up air vent is to be supplied by the General Contractor.

NOTE: All dryer exhaust venting is to be supplied by the General Contractor.



2000 SF COIN LAUNDRY

Project No. C14****

Area 2000

Drawn By KRP

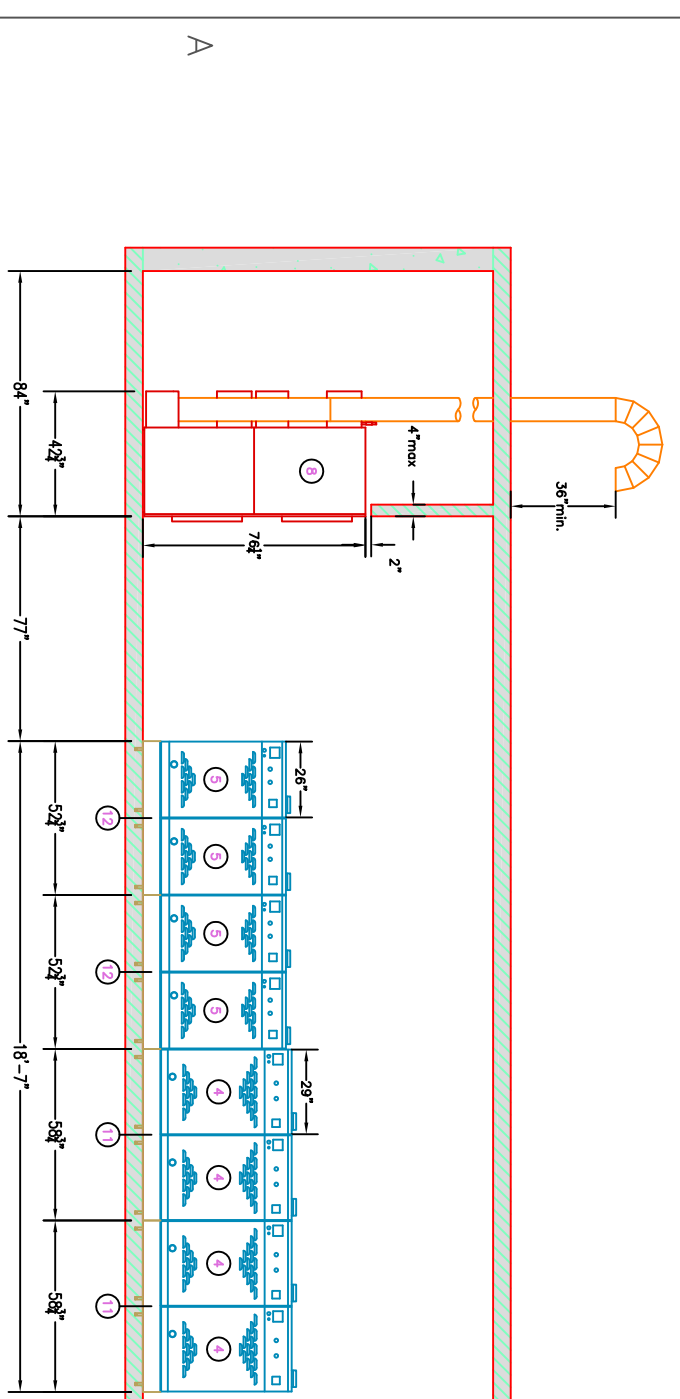
Date 31-Mar-15

Contact Info Alliance Laundry Systems LLC
PH: 920-748-3121
FX: 920-748-1662

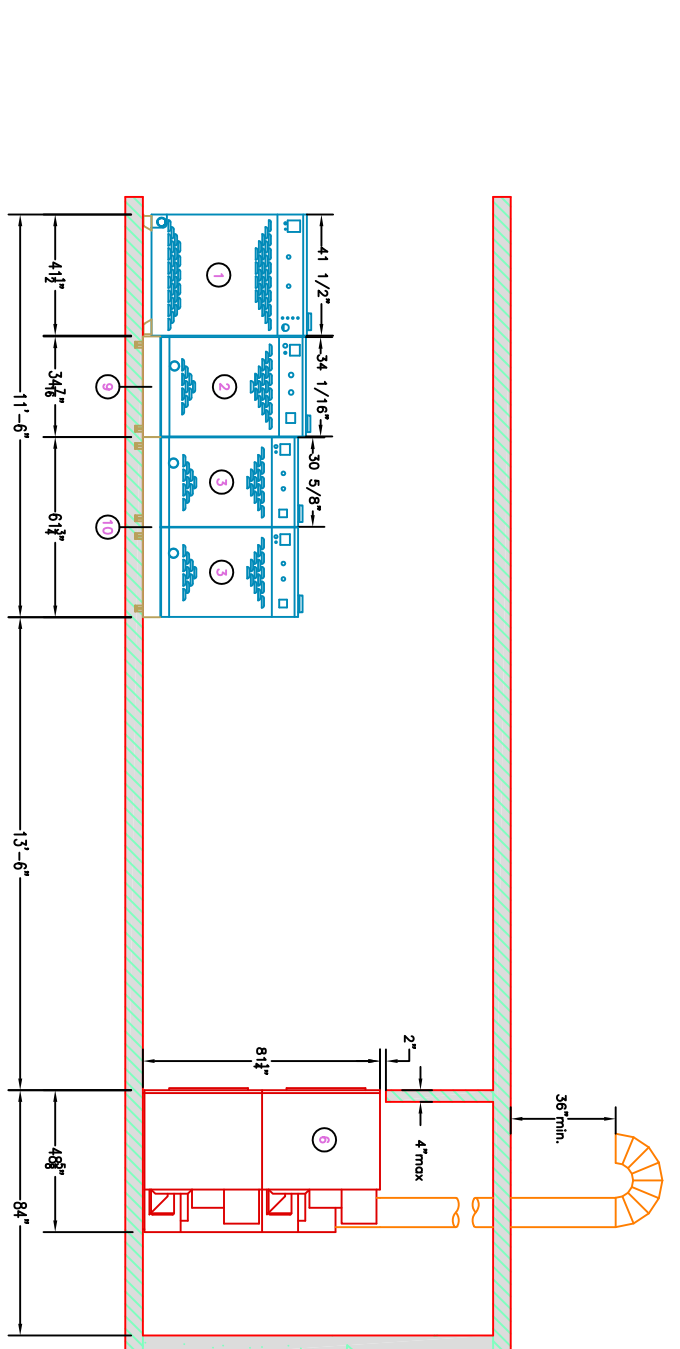


Equipment specifications are subject to change without notice. Please use this drawing along with the installation manuals for updated equipment installation requirements.

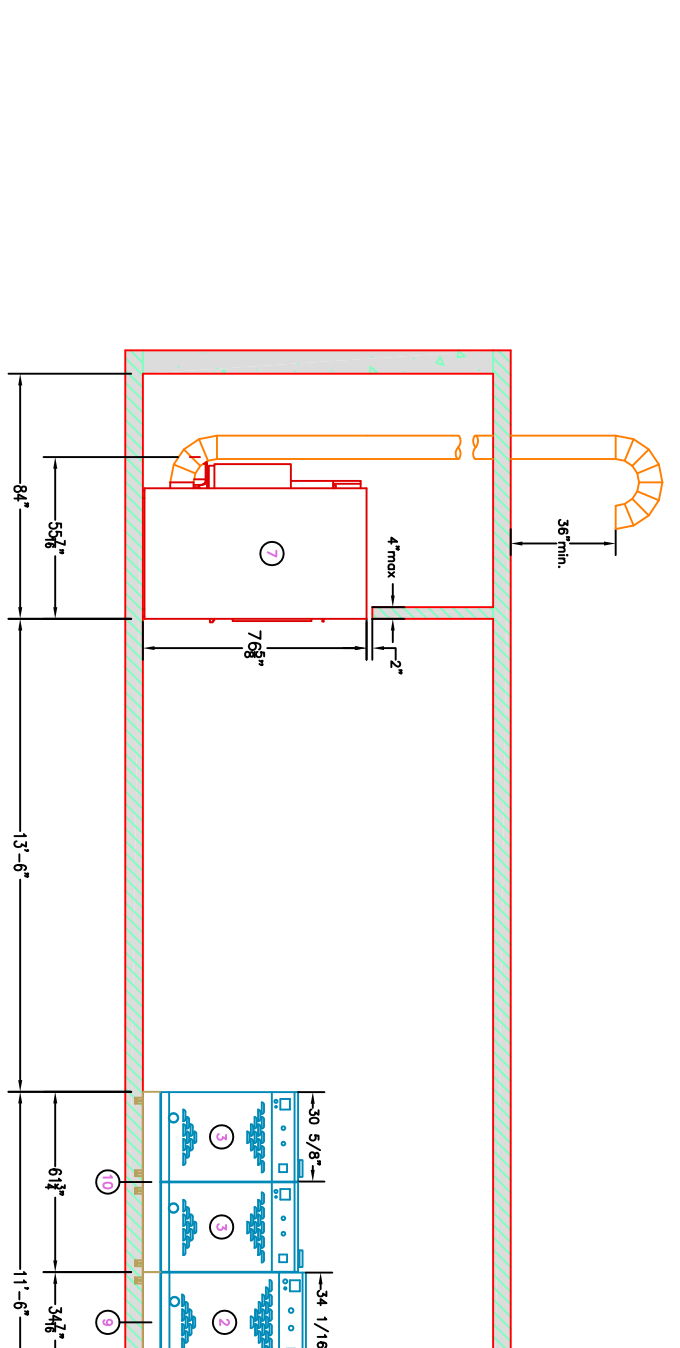
SHEET 1 OF 1



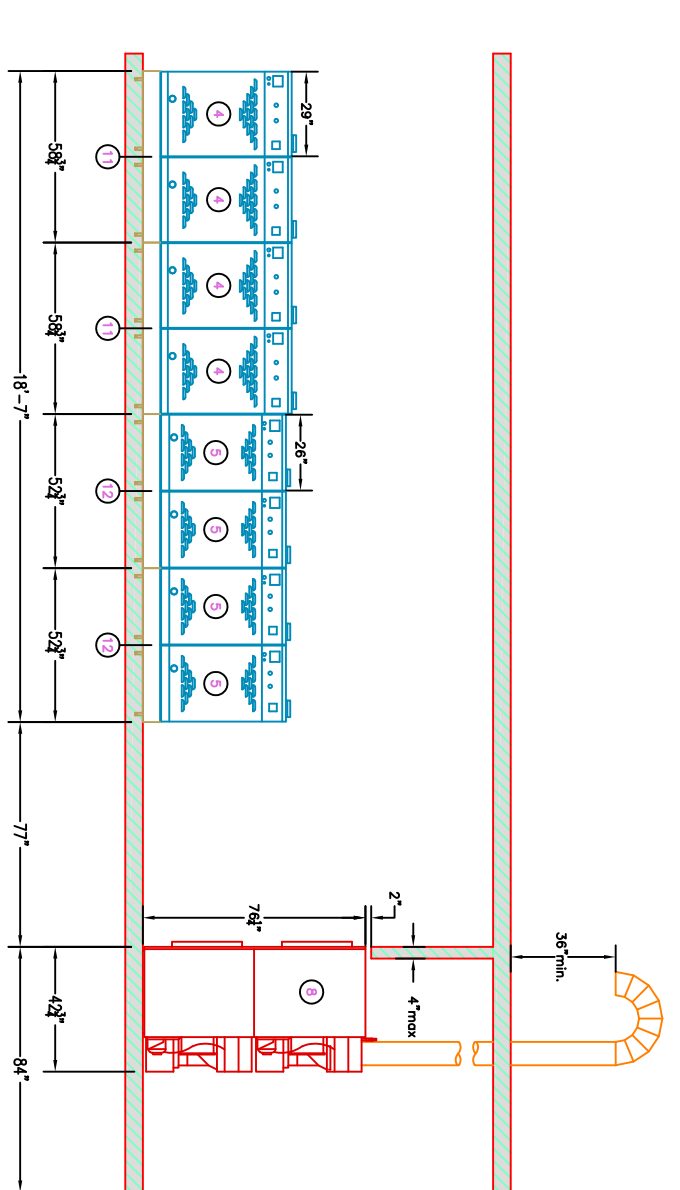
1 WASHER BANKS 1, 2, 3 & 4
ICN030KCV Side View, ICN060KCV Side Views and ICN020KCV Side View



2 WASHER BANKS 1, 2, 3 & 4
ICN030KCV Side View, ICN060KCV Side Views and ICN020KCV Side View



3 WASHER BANKS 1, 2, 3 & 4
ICN020KCV Side View, ICN040KCV Side Views and ICN020KCV Side View



4 DRYER BANK 1
IT075N Side View, ICN040KCV Back View, ICN060KCV Back View and ICN080KCV Back View



5 WASHER BANK 4 & DRYER BANK 1
ICN030KCV Back Views, ICN020KCV Back Views and IT030N Side View